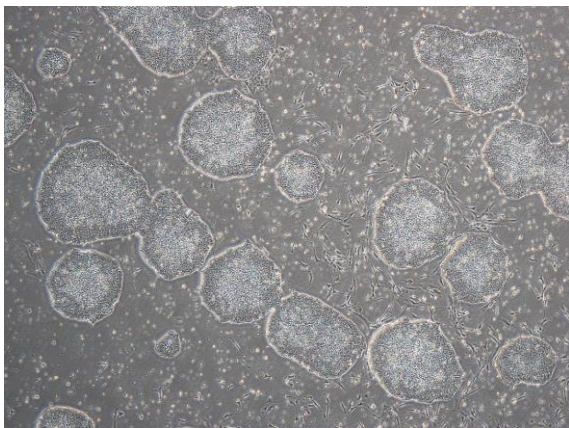
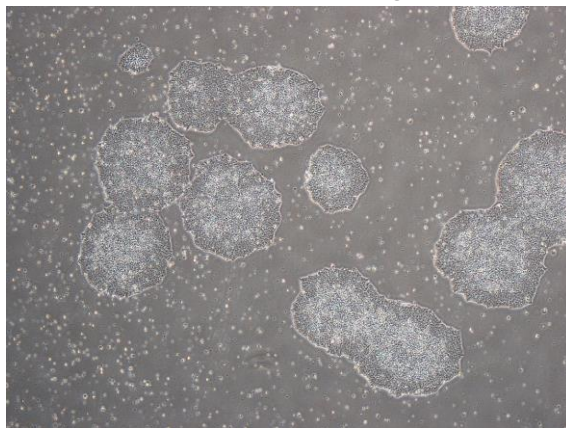


【 CiRA-j-1009 】 Morphology of iPSC colonies

CiRA-j-1009-A: passage-2



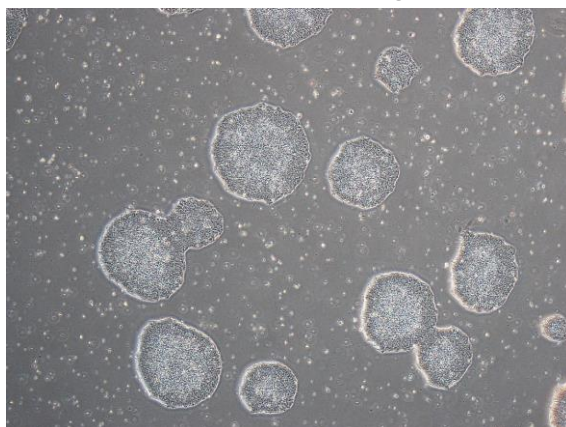
CiRA-j-1009-B: passage-2



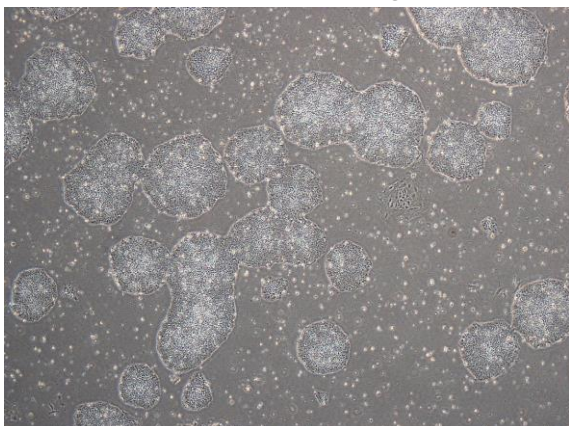
CiRA-j-1009-C: passage-3



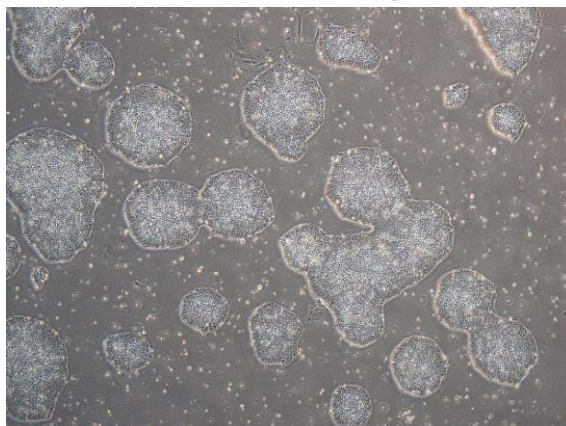
CiRA-j-1009-D: passage-2



CiRA-j-1009-E: passage-2



CiRA-j-1009-F: passage-2



(All images were captured at 4x magnification)